

TL34-65HF AGRI 130 IV Telescopic Handler

Telescopic Specifications

Performance

Lifting height — on tyres	6415.0 mm
Rated capacity	3400 kg
Capacity (at max. height on tyres)	3400 kg
Capacity (at max. reach on tyres)	1300 kg
Max. reach on tyres	3369.0 mm

Weights

Weight (unladen)	6690 kg
------------------	---------

Traction

Standard tyres	MICHELIN 460/70R24 159A8/159B IND TL XMCL
1st gear / low range	6.0 km/h
1st gear / high range	12.0 km/h
2nd gear / low range	18.0 km/h
2nd gear / high range	40.0 km/h

Drive System

Transmission	Hydrostatic with electronic regulation
Main drive	Hydrostatic motor + 2 speed gearbox

Engine

Make / Model	Bobcat D34
Fuel	Diesel
Cooling	Coolant
Rated power (ISO 14396:2002) at 2400 RPM	130.0 HP
Rated power (ISO 14396:2002) at 2400 RPM	97.0 kW
Maximum torque at 1400 RPM	500.0 Nm
Number of cylinders	4
Displacement	3.40 L

Hydraulic System

Pump type	LS piston pump with electric displacement limiter
Pump capacity	190.00 L/min
Relief valve pressure setting	255.00 bar

Cycle Times

Lift time - no load	4.9 s
Lower time - no load	4.3 s
Telescope in time at max. reach - no load	3.7 s
Telescope in time at max. height - no load	3.7 s
Telescope out time at max. reach - no load	4.0 s
Telescope out time at max. height - no load	3.8 s

Brakes

Engine braking	Hydrostatic
Parking and emergency brake	Passive brake

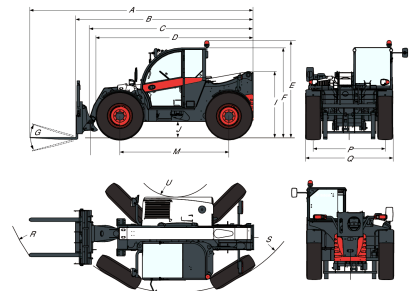
Fluid Capacities

Fuel tank	138.00 L
Hydraulic reservoir	59.00 L

Environmental

Operator noise level (LpA) (EN 12053)	77 dB(A)
Level of acoustic power (LWA)	107 dB(A)
Whole body vibration (EN 13059)	1.20 ms ⁻²

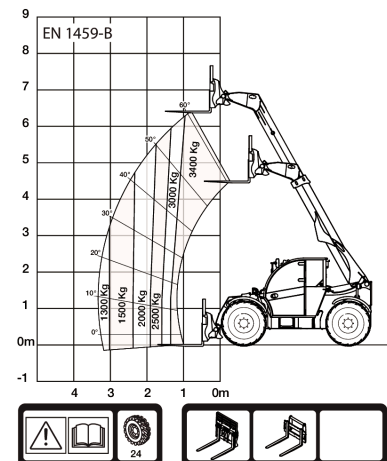
Dimensions



(-) 900.0 mm	(L) 1156.0 mm
(A) 5874.0 mm	(M) 2870.0 mm
(B) 4669.0 mm	(N) 643.0 mm
(C) 4563.0 mm	(O) 1013.0 mm
(D) 4145.0 mm	(P) 1895.0 mm
(E) 2561.0 mm	(Q) 2300.0 mm
(F) 2374.0 mm	(R) 4758.0 mm
(G) 135.0°	(S) 4852.0 mm
(I) 1752.0 mm	(T) 3714.0 mm
(J) 430.0 mm	(U) 1092.0 mm

Load Charts

With forks on 24 inch tyres



99162 G7

7295866

Options

Air conditioning	Manitou carriage with manual attachment lock
Boom stop	Blue lights for henhouses
Custom colour	Boom suspension
Fire extinguisher	Forward/Reverse control on joystick and steering wheel
Forward/Reverse control on Steering Wheel Lever (no longer on joystick)	Rear auxiliary line
Protective grill for windshield (front and roof)	Rotating tow hitch with height adjustment (auto-lock/German style) (including rear electric socket)
Wheel wedge	Rotating tow hitch with height adjustment (manual locking) (including rear electric socket)
Keyless ignition (start/stop with keypad)	Michelin tyres - set of 4 x 500/70R24" XMCL (AGRICULTURAL) (Except overseas countries - Container shipping)
Quicktach carriage with hydraulic attachment lock (boom wiring harness mandatory)	Tool box
Standard engine ignition (with key) with additional keypad security	Hydraulic pick-up tow hitch (including rear electric)
Manitou carriage with hydraulic attachment lock (boom wiring harness mandatory)	

TL34-65HF AGRI 130 IV Telescopic Handler

Telescopic Specifications

socket) (rear flat mirror
mandatory)