

T36-120SL 100 IV Telescopic Handler

Telescopic Specifications

Performance

Lifting height — on stabilisers	11852.0 mm
Lifting height — on tyres	11529.0 mm
Rated capacity	3600 kg
Capacity (at max. height on stabilisers)	3200 kg
Capacity (at max. height on tyres)	2300 kg
Capacity (at max. reach on stabilisers)	1200 kg
Capacity (at max. reach on tyres)	350 kg
Max. reach on tyres	8193.0 mm

Weights

Weight (unladen)	8330 kg
------------------	---------

Traction

Standard tyres	SOLIDEAL 405/70-20 16PR
1st gear / low range	7.0 km/h
1st gear / high range	26.0 km/h

Drive System

Transmission	Hydrostatic with electronic regulation
Main drive	Hydrostatic motor

Engine

Make / Model	Bobcat D34
Fuel	Diesel
Cooling	Coolant
Rated power (ISO 14396:2002) at 2400 RPM	100.0 HP
Rated power (ISO 14396:2002) at 2400 RPM	74.5 kW
Maximum torque at 1400 RPM	430.0 Nm
Number of cylinders	4
Displacement	3.40 L

*Stage IIIB Bobcat D34 also available in 55kW/75HP version (without SCR/Ad-Blue after-treatment)

Hydraulic System

Pump type	Gear pump with LS valve
Pump capacity	100.00 L/min
Relief valve pressure setting	250.00 bar

Cycle Times

Lift time - no load	11.0 s
Lower time - no load	6.0 s
Telescope in time at max. reach - no load	8.0 s
Telescope in time at max. height - no load	8.0 s
Telescope out time at max. reach - no load	13.5 s
Telescope out time at max. height - no load	13.5 s

Brakes

Engine braking	Hydrostatic
Parking and emergency brake	Passive brake

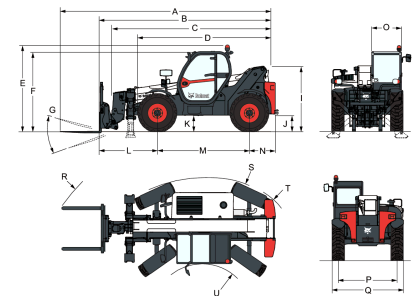
Fluid Capacities

Fuel tank	145.00 L
Hydraulic reservoir	71.00 L

Environmental

Operator noise level (LpA) (EN 12053)	76 dB(A)
Level of acoustic power (LWA)	106 dB(A)
Whole body vibration (EN 13059)	0.90 ms ⁻²

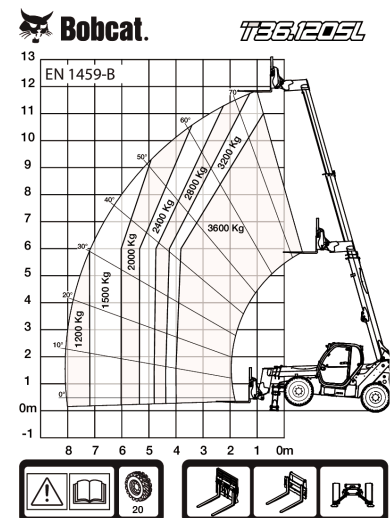
Dimensions



(-) 857.0 mm	(L) 1793.0 mm
(A) 6647.0 mm	(M) 2850.0 mm
(B) 5442.0 mm	(N) 799.0 mm
(C) 5287.0 mm	(O) 930.0 mm
(D) 4192.0 mm	(P) 1862.0 mm
(E) 2584.0 mm	(Q) 2264.0 mm
(F) 2445.0 mm	(R) 5341.0 mm
(G) 143.0°	(R) 5429.0 mm
(I) 1941.0 mm	(S) 3765.0 mm
(J) 415.0 mm	(U) 1245.0 mm

Load Charts

Load Charts



98889 G7

7294193

Options

Air conditioning	Work lights on boom
Boom stop	Proportional engine fan with inverter
Custom colour	Remote control system with on-board charger
Fire extinguisher	Basic tow hitch
Forward/Reverse control on Steering Wheel Lever (no longer on joystick)	Boom wiring harness and electric connectors
Lockable fuel cap	High comfort air suspension seat
Loudspeaker & radio ready	Keyless ignition (start/stop with keypad)
PVC Document holder	Michelin tyres - set of 4 x 400/80-24" 162A8 IND TL
Pintle tow hitch (including rear electric socket)	POWER CL
Protective grill for windshield (front and roof)	Pallet forks 1200mm length / Rigid frame / Forks included / Backrest included
Rear Flat Mirror	/ For Quicktach tool carrier
Roof window wiper	Pallet forks 1200mm length / Floating / 1,44m carriage / Forks included / Backrest
Sun visor	
Support for vehicle registration plate	
Wheel wedge	

T36-120SL 100 IV Telescopic Handler

Telescopic Specifications

included / For Quicktach
tool carrier
Quicktach carriage with
hydraulic attachment lock
(boom wiring harness
mandatory)
Rotating tow hitch (including
rear electric socket)
Standard engine ignition
(with key) with additional
keypad security
Basic option tyres - set of 4
x 400/80-24"
Dunlop tyres - set of 4 x
405/70-24" SPT9 MPT
(SEMI INDUSTRIAL)