

# T35-140S 100 IV Telescopic Handler

## Telescopic Specifications

### Performance

|  |            |
|--|------------|
| Lifting height — on stabilisers          | 13656.0 mm |
| Lifting height — on tyres (65°)          | 12794.0 mm |
| Rated capacity                           | 3500 kg    |
| Capacity (at max. height on stabilisers) | 3500 kg    |
| Capacity (at max. height on tyres)       | 500 kg     |
| Capacity (at max. reach on stabilisers)  | 1000 kg    |
| Capacity (at max. reach on tyres)        | 150 kg     |
| Max. reach on tyres                      | 9449.0 mm  |

### Weights

|                  |         |
|------------------|---------|
| Weight (unladen) | 9330 kg |
|------------------|---------|

### Traction

|                       |                         |
|-----------------------|-------------------------|
| Standard tyres        | SOLIDEAL 400/80-24 20PR |
| 1st gear / low range  | 8.5 km/h                |
| 1st gear / high range | 30.0 km/h               |

### Drive System

|              |  |
|--------------|--|
| Transmission | Hydrostatic with electronic regulation |
| Main drive   | Hydrostatic motor                      |

### Engine

|  |            |
|--|------------|
| Make / Model                             | Bobcat D34 |
| Fuel                                     | Diesel     |
| Cooling                                  | Coolant    |
| Rated power (ISO 14396:2002) at 2400 RPM | 100.0 HP   |
| Rated power (ISO 14396:2002) at 2400 RPM | 74.5 kW    |
| Maximum torque at 1400 RPM               | 430.0 Nm   |
| Number of cylinders                      | 4          |
| Displacement                             | 3.40 L     |

\*Stage IIIB Bobcat D34 also available in 55kW/75HP version (without SCR/Ad-Blue after-treatment)

### Hydraulic System

|                               |                         |
|-------------------------------|-------------------------|
| Pump type                     | Gear pump with LS valve |
| Pump capacity                 | 100.00 L/min            |
| Relief valve pressure setting | 250.00 bar              |

### Cycle Times

|   |        |
|---|--------|
| Lift time - no load                         | 14.0 s |
| Lower time - no load                        | 8.5 s  |
| Telescope in time at max. reach - no load   | 13.0 s |
| Telescope in time at max. height - no load  | 11.5 s |
| Telescope out time at max. reach - no load  | 20.5 s |
| Telescope out time at max. height - no load | 20.5 s |

### Brakes

|                             |               |
|-----------------------------|---------------|
| Engine braking              | Hydrostatic   |
| Parking and emergency brake | Passive brake |

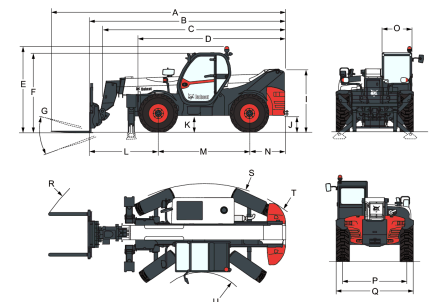
### Fluid Capacities

|                     |          |
|---------------------|----------|
| Fuel tank           | 145.00 L |
| Hydraulic reservoir | 76.00 L  |

### Environmental

|                                       |                       |
|---------------------------------------|-----------------------|
| Operator noise level (LpA) (EN 12053) | 78 dB(A)              |
| Level of acoustic power (LWA)         | 106 dB(A)             |
| Whole body vibration (EN 13059)       | 1.20 ms <sup>-2</sup> |

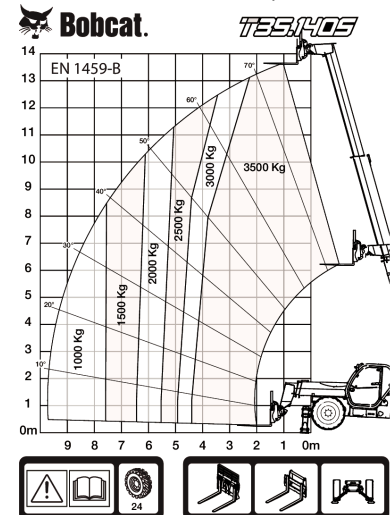
### Dimensions



|               |               |
|---------------|---------------|
| (-) 857.0 mm  | (L) 2151.0 mm |
| (A) 7313.0 mm | (M) 2850.0 mm |
| (B) 6108.0 mm | (N) 1107.0 mm |
| (C) 5709.0 mm | (O) 930.0 mm  |
| (D) 4573.0 mm | (P) 1992.0 mm |
| (E) 2673.0 mm | (Q) 2418.0 mm |
| (F) 2536.0 mm | (R) 5640.0 mm |
| (G) 124.0°    | (S) 4150.0 mm |
| (I) 1956.0 mm | (U) 1519.0 mm |
| (J) 509.0 mm  |               |

### Load Charts

With forks and standard 400/80x24 tyres, on stabilisers



98427 G7

7286680

### Options

|   |  |
|---|--|
| Air conditioning  | Remote control system with on-board charger  |
| Boom stop   | Basic tow hitch  |
| Custom colour   | Boom wiring harness and electric connectors  |
| Fire extinguisher   | High comfort air suspension seat   |
| Forward/Reverse control on Steering Wheel Lever (no longer on joystick) | Keyless ignition (start/stop with keypad)  |
| Lockable fuel cap   | Manitou carriage with manual attachment lock   |
| Loudspeaker & radio ready   | Manitou carriage with hydraulic attachment lock (boom wiring harness mandatory)                            |
| PVC Document holder   | Michelin tyres - set of 4 x 400/80-24" 162A8 IND TL POWER CL   |
| Pintle tow hitch (including rear electric socket)                       | Pallet forks 1200mm length / Rigid frame / Forks included / Backrest included / For Quicktach tool carrier |
| Protective grill for windshield (front and roof)                        | Pallet forks 1200mm length / Floating / 1,44m carriage   |
| Rear Flat Mirror  |  |
| Roof window wiper   |  |
| Sun visor   |  |
| Support for vehicle registration plate                                  |  |
| Wheel wedge   |  |
| Work lights on boom   |  |
| Proportional engine fan with inverter                                   |  |

# T35-140S 100 IV Telescopic Handler

## Telescopic Specifications

/ Forks included / Backrest included / For Quicktach tool carrier  
Quicktach carriage with hydraulic attachment lock (boom wiring harness mandatory)  
Rotating tow hitch (including rear electric socket)  
Standard engine ignition (with key) with additional keypad security  
Pallet forks 1200mm length / Floating / 1,12m carriage / Forks included / Backrest included / For Manitach tool carrier  
Pallet forks 1200mm length / Floating / 1,44m carriage / Forks included / Backrest included / For Manitach tool carrier  
Pallet forks 1200mm length / Rigid frame / Forks included / Backrest included / For Manitach tool carrier