

T35-105L 100 IV Telescopic Handler

Telescopes Specifications

Performance

Lifting height — on tyres	10290.0 mm
Rated capacity	3500 kg
Capacity (at max. height on tyres)	2500 kg
Capacity (at max. reach on tyres)	600 kg
Max. reach on tyres	6886.0 mm

Weights

Weight (unladen)	7360 kg
------------------	---------

Traction

Standard tyres	SOLIDEAL 405/70-20 14PR
1st gear / low range	7.0 km/h
1st gear / high range	26.0 km/h

Drive System

Transmission	Hydrostatic with electronic regulation
Main drive	Hydrostatic motor

Engine

Make / Model	Bobcat D34
Fuel	Diesel
Cooling	Coolant
Rated power (ISO 14396:2002) at 2400 RPM	100.0 HP
Rated power (ISO 14396:2002) at 2200 RPM	74.5 kW
Maximum torque at 1400 RPM	430.0 Nm
Number of cylinders	4
Displacement	3.40 L

*Stage IIIB Bobcat D34 also available in 55kW/75HP version (without SCR/Ad-Blue after-treatment)

Hydraulic System

Pump type	Gear pump with LS valve
Pump capacity	100.00 L/min
Relief valve pressure setting	250.00 bar

Cycle Times

Lift time - no load	11.0 s
Lower time - no load	6.0 s
Telescope in time at max. reach - no load	7.0 s
Telescope in time at max. height - no load	7.0 s
Telescope out time at max. reach - no load	11.5 s
Telescope out time at max. height - no load	11.5 s

Brakes

Engine braking	Hydrostatic
Parking and emergency brake	Passive brake

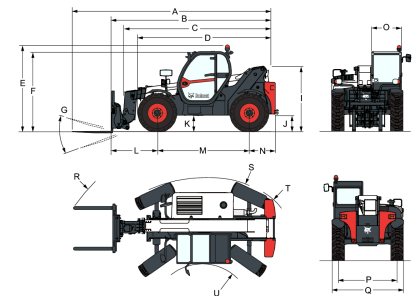
Fluid Capacities

Fuel tank	130.00 L
Hydraulic reservoir	71.00 L

Environmental

Operator noise level (LpA) (EN 12053)	76 dB(A)
Level of acoustic power (LWA)	106 dB(A)
Whole body vibration (EN 13059)	0.90 ms ⁻²

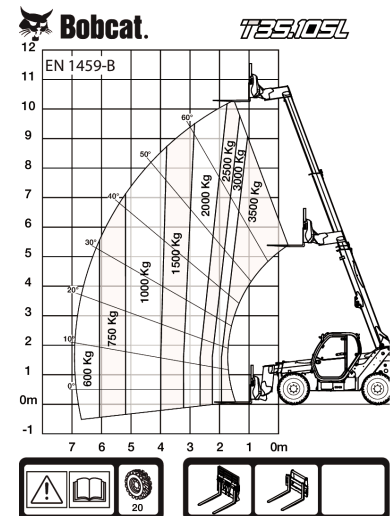
Dimensions



(-) 857.0 mm	(L) 1422.0 mm
(A) 6276.0 mm	(M) 2850.0 mm
(B) 5071.0 mm	(N) 799.0 mm
(C) 4936.0 mm	(O) 930.0 mm
(D) 4192.0 mm	(P) 1862.0 mm
(E) 2584.0 mm	(Q) 2264.0 mm
(F) 2445.0 mm	(R) 5025.0 mm
(G) 143.0°	(R) 5116.0 mm
(I) 1941.0 mm	(S) 3765.0 mm
(J) 415.0 mm	(U) 1245.0 mm

Load Charts

Load Charts



98884 G7

7294187

Options

Air conditioning	Remote control system with on-board charger
Boom stop	Boom wiring harness and electric connectors
Custom colour	Keyless ignition (start/stop with keypad)
Fire extinguisher	Standard engine ignition (with key) with additional keypad security
Forward/Reverse control on Steering Wheel Lever (no longer on joystick)	High comfort air suspension seat
Lockable fuel cap	Rotating tow hitch (including rear electric socket)
Loudspeaker & radio ready	Basic option tyres - set of 4 x 400/80-24"
PVC Document holder	Basic tow hitch
Pintle tow hitch (including rear electric socket)	Michelin tyres - set of 4 x 400/80-24" 162A8 IND TL
Protective grill for windshield (front and roof)	POWER CL
Rear Flat Mirror	Pallet forks 1200mm length / Floating / 1,44m carriage / Forks included / Backrest
Roof window wiper	
Sun visor	
Support for vehicle registration plate	
Wheel wedge	
Work lights on boom	

T35-105L 100 IV Telescopic Handler

Telescopic Specifications

included / For Quicktach
tool carrier
Pallet forks 1200mm
length / Rigid frame / Forks
included / Backrest included
/ For Quicktach tool carrier
Dunlop tyres - set of 4 x
405/70-20" SPT9 MPT
(SEMI INDUSTRIAL)
Dunlop tyres - set of 4 x
405/70-24" SPT9 MPT
(SEMI INDUSTRIAL)
Fan inverter with manual
and auto modes
Quicktach carriage with
hydraulic attachment lock
(boom wiring harness
mandatory)